



THE SWIMSUIT

— D R Y E R —

User Manual

240v 50/60hz models

Table of Contents

1	PURPOSE	4
1.1	PROPER USAGE AND LIABILITY.....	4
1.2	IDENTIFICATION & CERTIFICATION.....	4
2	THE SWIMSUIT DRYER INFORMATION	5
2.1	WHERE WOULD YOU EXPECT TO FIND THE SWIMSUIT DRYER	5
2.2	ITEMS SUPPLIED WITH THE SWIMSUIT DRYER	5
2.3	LOCATION AND PRE-INSTALLATION.....	5
3	PRE-INSTALLATION – REMOVAL OF TRANSIT BAR.....	6
4	WALL MOUNTED INSTALLATION (WALL & COUNTER TOP MODELS)	7
4.1	SECURE THE WALL PLATE.....	7
4.2	WALL MOUNTED MODEL – INSTALLATION DIAGRAM	8
4.3	COUNTER-TOP MODEL – WALL INSTALLATION DIAGRAM	9
5	COUNTER-TOP INSTALLATION	10
5.1	SURFACE PREPARATION	10
5.2	COUNTER-TOP MODEL – COUNTER-TOP.....	11
5.3	CONNECTING THE SWIMSUIT DRYER TO A WASTE OUTLET	11
6	ELECTRICAL CONNECTION.....	13
6.1	RECEPTABLE/ ELECTRICAL SOCKET	13
6.2	HARD WIRED	13
7	USER MAINTENANCE INSTRUCTIONS	14
7.1	DAILY INSPECTION REQUIREMENTS.....	14
7.2	CLEANING REQUIREMENTS	15
7.3	CLEANING INSTRUCTIONS.....	15
7.4	WEEKLY CLEANING REQUIREMENTS.....	15
7.5	MONTHLY CLEANING REQUIREMENTS	16
7.6	MONTHLY TESTS	16
8	MAINTENANCE SCHEDULE.....	17
	DAILY OPERATING INSTRUCTIONS:.....	17
	WEEKLY CLEANING REQUIREMENTS:	17
	MONTHLY REQUIREMENTS.....	17
	END OF WEEKLY SCHEDULE:.....	17

9	SERVICE LIFE/ REPAIR	18
10	TROUBLESHOOTING GUIDE	20
10.1	LEAKING	20
10.2	DOES NOT OPERATE – FRONT LED IS NOT ON.....	20
9.3	DOES NOT OPERATE – LED ON BUT DOES NOT GLOW BRIGHTER WHEN LID PRESSED.....	22
9.4	DOES NOT OPERATE - FRONT LED GLOWS BRIGHTER WHEN LID PRESSED DOWN BUT DOES NOT SPIN ..	23
9.5	DELAYED STOPPING WHEN LID IS LIFTED	24
10.6	WARRANTIES AND GUARANTEES.....	24
10.7	PRODUCT EXCHANGE/REPAIR/DISPOSAL	24
11	PARTS MANUAL	26
11.1	PARTS.....	26
11.1	INNER PARTS	27
11.1	ELECTRICAL MOTOR PARTS	27
12	TECHNICAL SPECIFICATIONS.....	29

1 Purpose

The Swimsuit Dryer is designed for commercial usage. It is designed for high cycle usage.

The purpose of the Swimsuit Dryer is to give the user the facility to remove water from their Swimsuits quickly, thus increasing their satisfaction with the pool experience, encouraging the user to continue to use the pool, sauna, steam room and other wet facilities offered. The Swimsuit Dryer has been designed, not only to increase the user's satisfaction, but to also offer a low-cost maintenance solution for the purchaser.

1.1 Proper usage and liability

The Swimsuit Dryer is intended to dry Swimsuits ONLY, neither The Swimsuit Dryer Company, the purchaser, nor the facility where the Swimsuit Dryer is installed will not be liable or take responsibility for any damages to swimming costumes where the user has not properly followed the instructions given.

The appliance is not to be used by persons (including children) with reduced physical, sensory, or mental capabilities, or lack of experience and knowledge, unless they have been given supervision or instruction.

Operating instructions can be found on the inside of the lid and should have wall instructions placed above the machine.

The Swimsuit Dryer is designed to dry one swimsuit only (weight of dry cloth not to exceed 0.4 kg or 0.88 lbs) with any strings facing down.

1.2 Identification & Certification

Please see the label located on the bottom right-hand side of The Swimsuit Dryer for the following Information:

- Serial Number
- Voltage and Frequency
- Manufactured Date
- Certification
- IP Rating
- Recommended Service

2 The Swimsuit Dryer Information

2.1 Where Would You Expect to Find the Swimsuit Dryer

The Facilities that a user could expect to find The Swimsuit Dryer installed in are:

Health Clubs • Gyms • Public Swimming Pools • Hotels with Leisure Facilities • Spas • Holiday Resorts • Universities • Wellness Centers • Recreation Centers • Cruise Liners • Any Commercial Property with a pool or wet area.

2.2 Items Supplied with the Swimsuit Dryer

The Swimsuit Dryer will be supplied with the following items. The items listed below must be kept should the unit experience a fault in or out of warranty, and to carry out any necessary maintenance.

Shipping Box and Packaging	Securing Bracket
User Manual	Fixing Screws
T30 Screwdriver	Mounting Bracket
Swimsuit Dryer Cleaning Brush	Cleaning Towel & Cleaner

2.3 Location and Pre-Installation.

We recommended all Next Generation Swimsuit Dryers are Installed:

- In a changing/Locker room, outside a changing/Locker room, in a corridor, or in an area where facility users have access, a dry or semi wet area, and a location where the wastewater can be removed.
- If the equipment is installed outside, the equipment must be covered and not subjected to prolonged periods of direct sunlight.

The Swimsuit Dryer Must NOT be installed by anyone in any of the following locations:

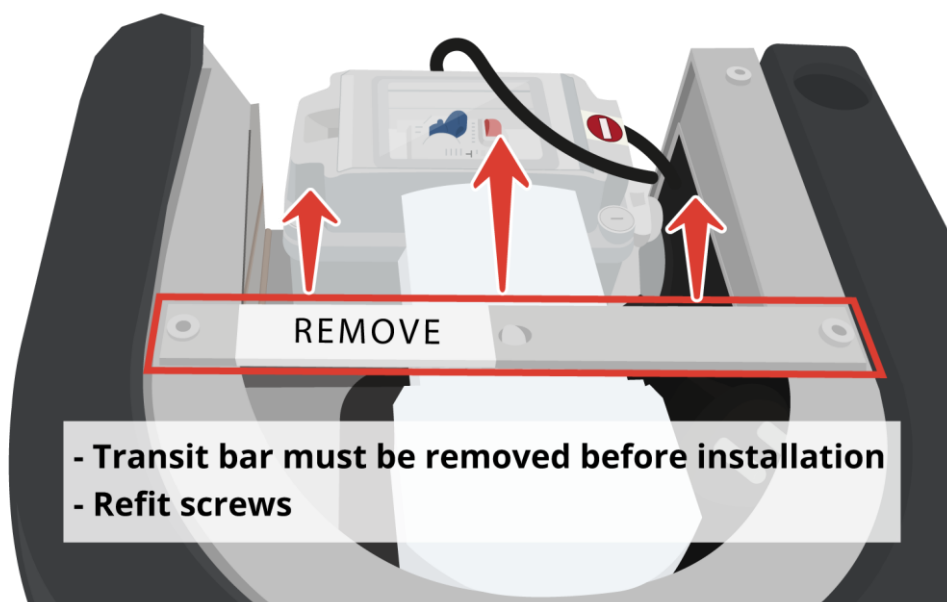
- Any location where local laws and regulations do not permit mains equipment to be installed.

3 PRE-INSTALLATION – REMOVAL OF TRANSIT BAR

WARNING: MAKE SURE YOU REMOVE THE TRANSIT BAR FROM UNDERNEATH THE SWIMSUIT DRYER!



If the Transit Bar is not removed from underneath the Swimsuit Dryer, it will not work.



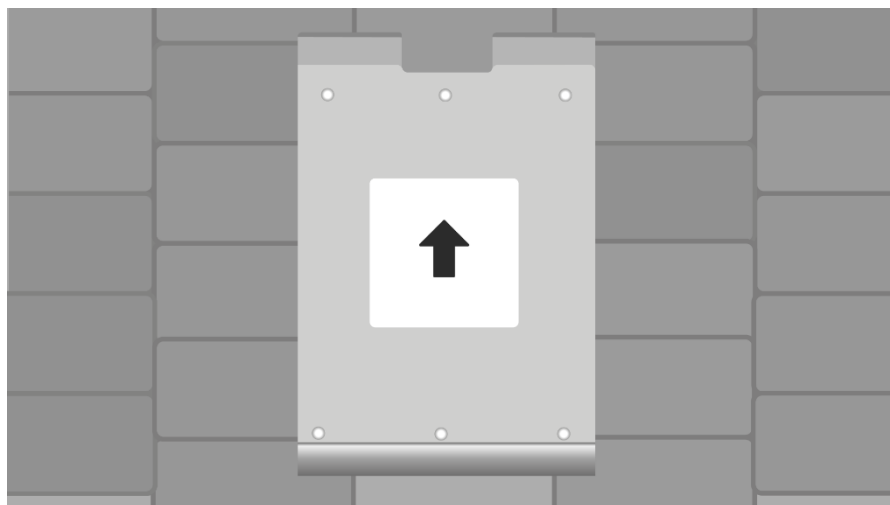
4 Wall Mounted Installation (Wall & Counter Top Models)

4.1 Secure the Wall Plate

- Please ensure the wall can support approximately 30kg/ 66lbs of weight.
- Place the wall mount on the wall and ensure the top is 1 meter from the floor, check with a spirit level to ensure the Mounting bracket is level. Mark your locating holes and drill the holes, insert wall fixings, then use the mounting screws to secure the bracket to the wall.

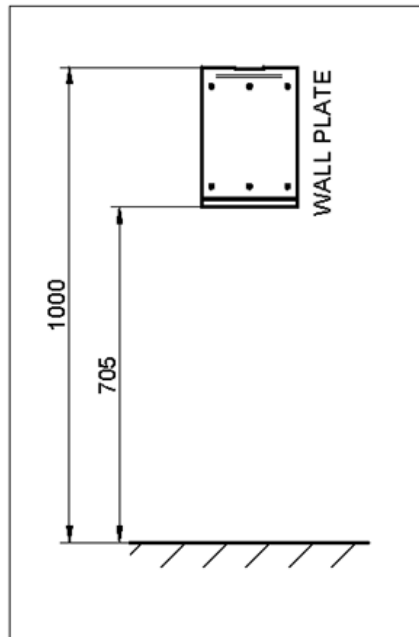
After securing the mounting bracket to the wall ensure it is level and fastened to the wall securely!

- Place the Swimsuit Dryer onto the mounting bracket and connect it to the power and drainage.

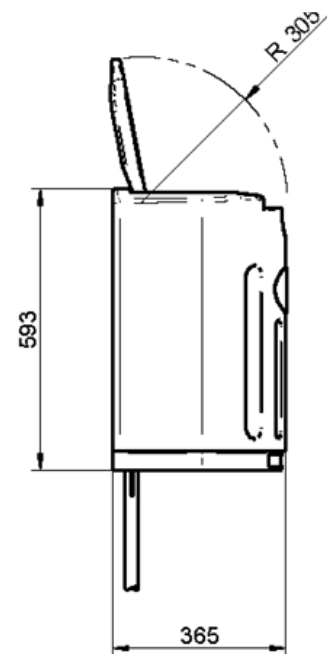
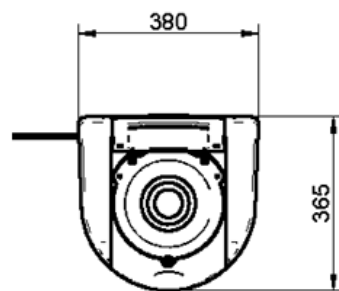
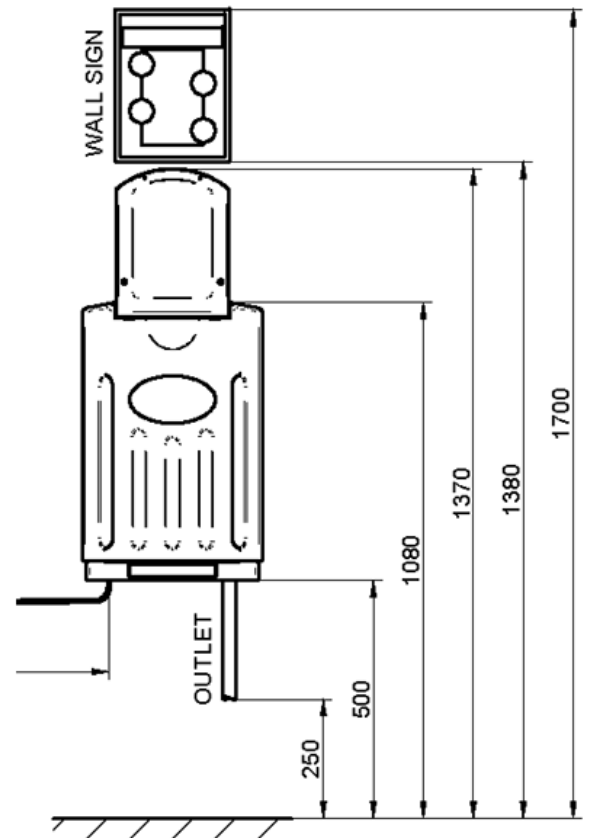


**WARNING: ENSURE THE DRAINAGE HOSE IS PULLED COMPLETELY DOWN!
FAILURE TO DO THIS MAY CAUSE BACK PRESSURE AND DAMAGE TO THE
MACHINE.**

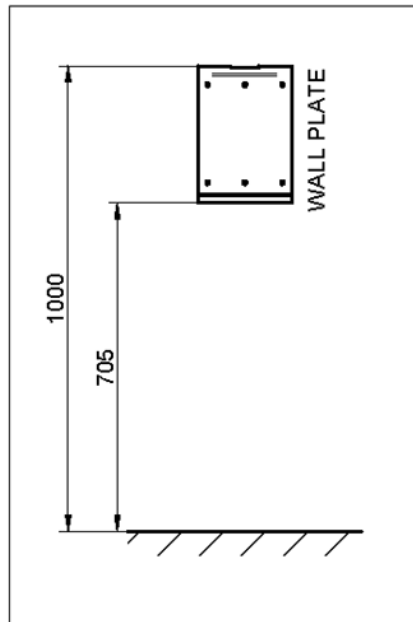
3.2 Wall Mounted Model – Installation Diagram



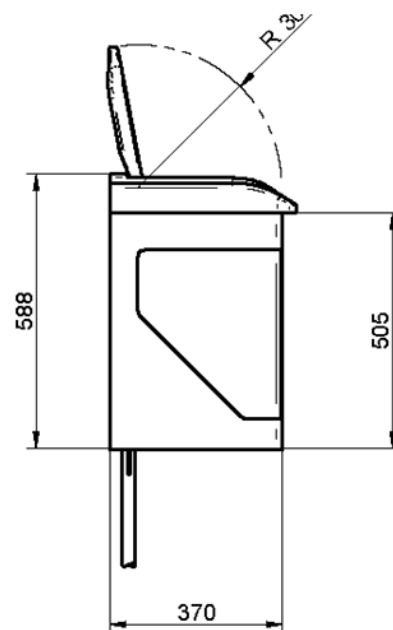
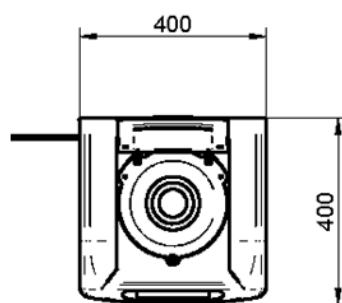
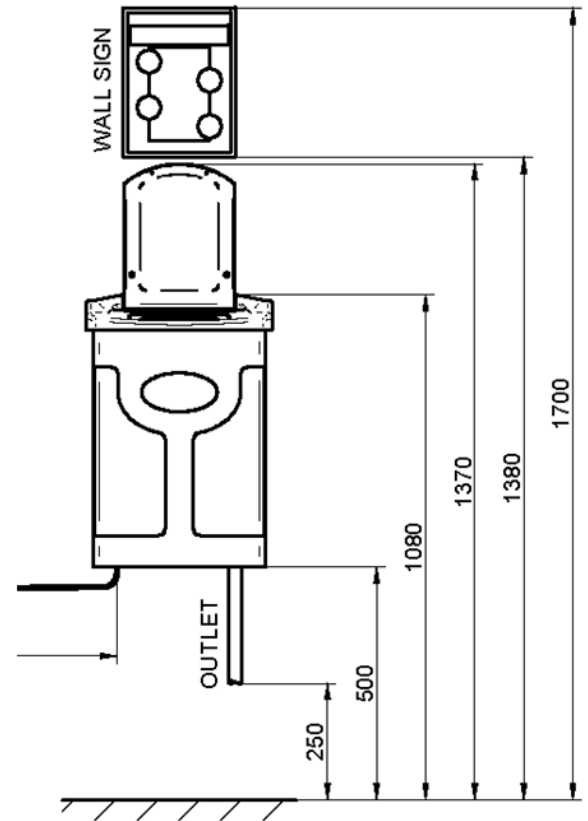
WALL PLATE DETAIL



4.3 Counter-Top Model – Wall Installation Diagram



WALL PLATE DETAIL



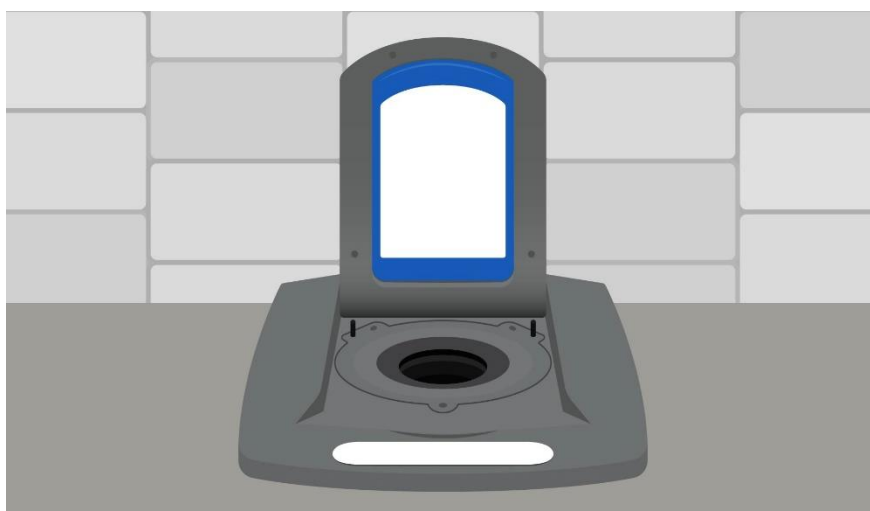
5 Counter-Top Installation

5.1 Surface Preparation

- Please ensure the countertop or tabletop can support approximately 30kg/ 66lbs of weight.
- Measure your surface using the dimensions shown on the installation diagram and cut this out.

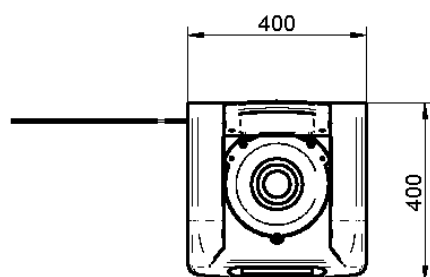
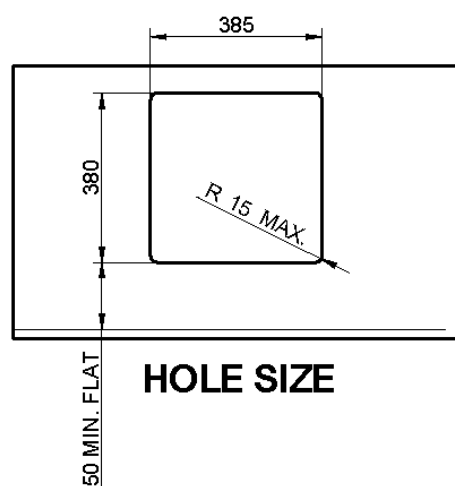


- Place the Swimsuit Dryer into the hole and connect it to the power and drainage.

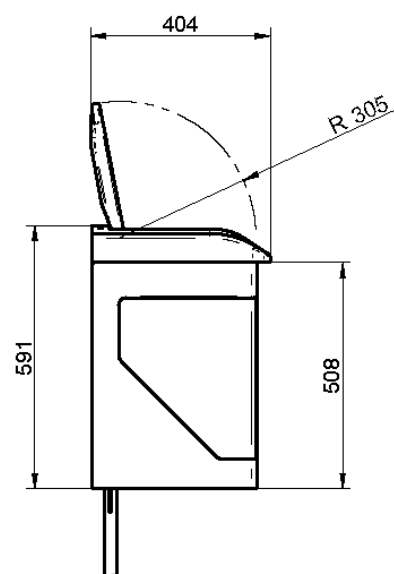
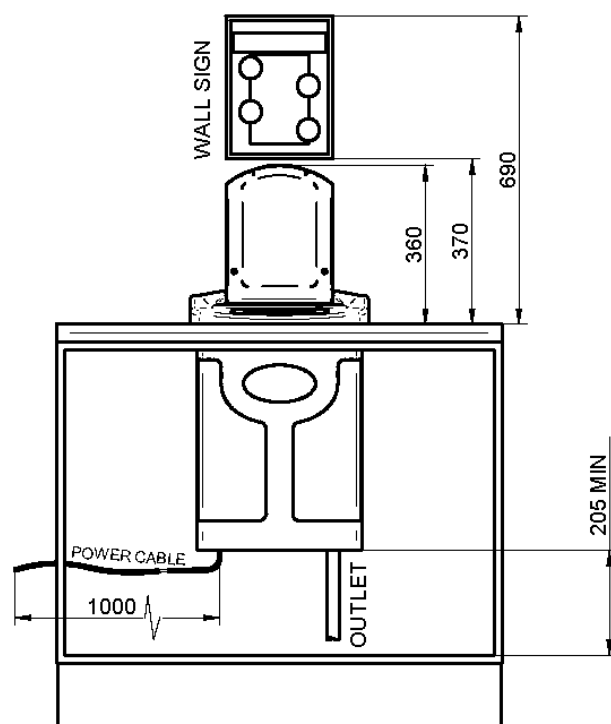


**WARNING: ENSURE THE DRAINAGE HOSE IS PULLED COMPLETELY DOWN!
FAILURE TO DO THIS MAY CAUSE BACK PRESSURE AND DAMAGE TO THE
MACHINE.**

5.2 Counter-Top Model – Counter-Top



COUNTER UNIT NOT PART OF ASSEMBLY. SHOWN AS REPRESENTATION ONLY

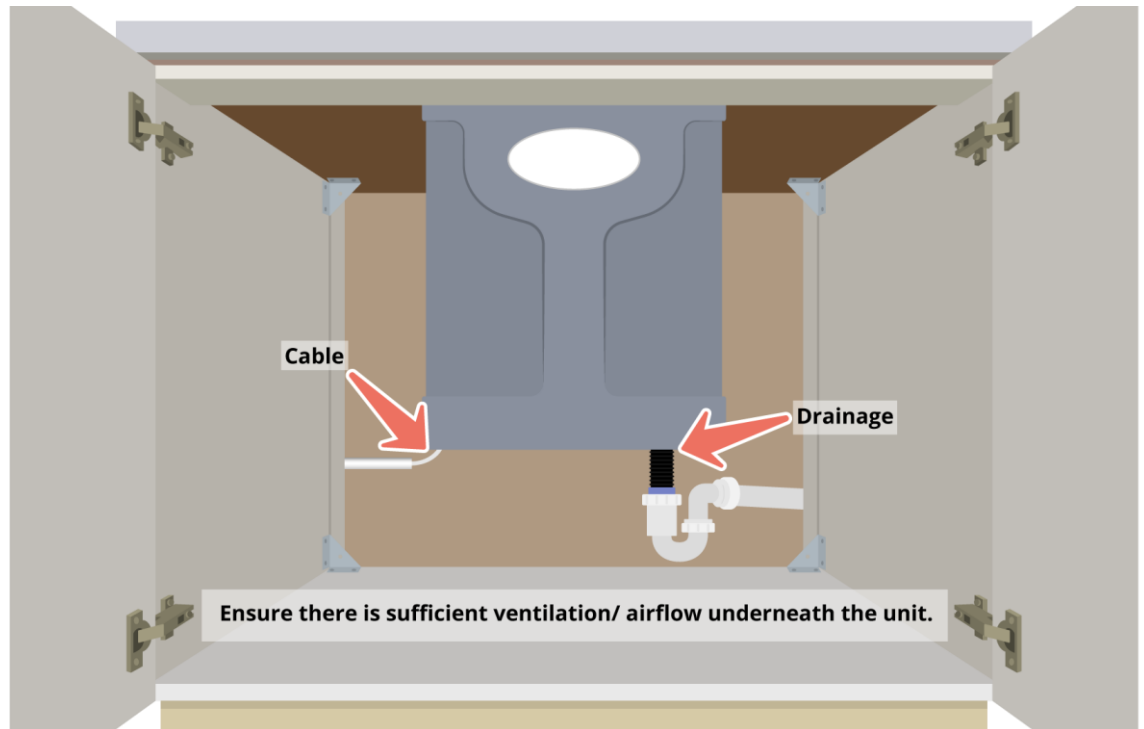


5.3 Connecting the Swimsuit Dryer to a waste outlet

If you have not purchased our built-in water tank, the Swimsuit Dryer will need to be connected to your wastewater outlet. This can be done by a professional tradesman.

Simply connect the waste outlet to your external plumbing.

Example of Swimsuit Dryer plumbed into the wall.



Ensure there is sufficient ventilation underneath the unit.

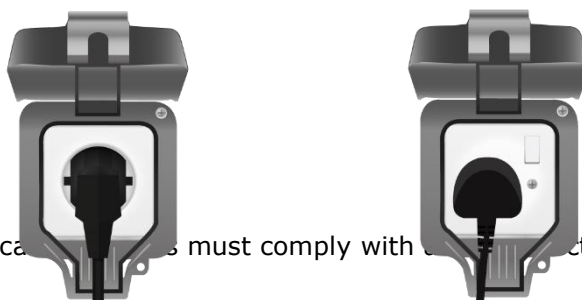
**WARNING: ENSURE THE DRAINAGE HOSE IS PULLED COMPLETELY DOWN!
FAILURE TO DO THIS MAY CAUSE BACK PRESSURE AND CAUSE DAMAGE TO
THE MACHINE.**

6 Electrical Connection

WARNING: Please consult with a qualified electrician and ensure he complies with the local regulations.

6.1 Receptable/ Electrical Socket

If you are in the USA, UK, EU, or country that has the same connections you can order your Swimsuit Dryer with a plug. Simply plug the Swimsuit Dryer in and you are ready to use.



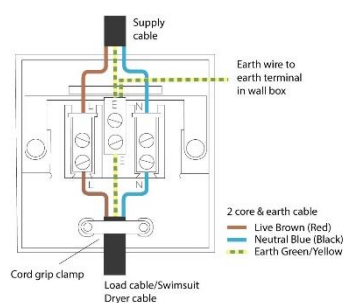
**** Weatherproof electrical connections must comply with local Electrical Regulations.**

6.2 Hard Wired

If you need to hard wire your Swimsuit Dryer into a Fused Socket or Receptable please contact a qualified electrician.



Representative images ONLY



WARNING: TO REDUCE THE RISK OF INJURY OR DAMAGE, CHECK THE SUPPLY CORD HAS NOT BEEN DAMAGED BEFORE INSTALLATION. IF YOUR CORD IS DAMAGED THIS MUST BE REPLACED BY US, AN APPOINTED REPRESENTATIVE OR A QUALIFIED ELECTRICIAN.

The Swimsuit Dryer has been manufactured to require little to no maintenance. However, Weekly cleaning and inspection should be undertaken to ensure the equipment is in good working order.

7.1 Daily Inspection Requirements

Daily Visual Inspection:

- Ensure lid instructions are readable and undamaged.
- Check Lid Springs and plungers are functioning correctly.

Replace any of the above items if any of these items are damaged or faulty.

RELEVANT PARTS:

P5 - Lid Operating Instructions

P4 – Lid Magnets

P16 – Black lid Plunger

P17 - Stainless Steel Lid Instructions

Daily Operating Instructions

- Press the lid down and immediately lift the lid to visually check the basket stops within 2 seconds. Repeat this process twice.

WARNING: If the Machine continues to spin during this test, immediately turn the equipment off and contact us: sales@swimsuitdryer.com.

WARNING: Should the machine appear damaged in anyway, or there is a malfunction, immediately turn the equipment off and contact us: sales@swimsuitdryer.com.

7.2 Cleaning Requirements

Your Swimsuit Dryer should be cleaned weekly, or as required. Short online videos can be found on our website: <https://www.swimsuitdryer.com/aftercare-2/>.

Equipment Required:

- Cleaner and Disinfectant (Not supplied, any local brand accepted)
- Hand Towel
- Screwdriver
- Cleaning Brush

Replacement Parts:

P102 – Cleaning Towel

P103 – Cleaning Brush

P107 – Torx Screwdriver

WARNING: DO NOT pour large amounts of water or cleaning solution directly into the Swimsuit Dryer.

7.3 Cleaning Instructions

To keep your Swimsuit Dryer clean and sanitized, we recommend you use a general disinfectant.

7.4 Weekly Cleaning Requirements

Step 1

- Spray the outer body of the Swimsuit Dryer with disinfectant and wipe it down with the cleaning towel.

WARNING: To reduce the risk of fire and injury, never use flammable solvents in or on the Swimsuit Dryer.

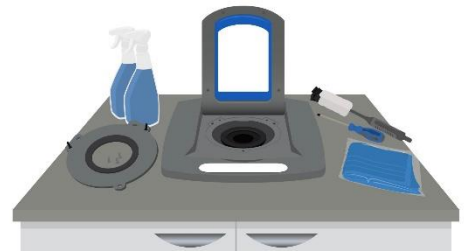
7.5 Monthly Cleaning Requirements

Step 1

- Lift the lid and remove the Top Cover.
- Spray the cleaner inside the drum/ basket and down between the drum and liner.

Step 2

- Re-fit the top ring cover making sure to tighten the security screws.
- Operate the dryer for 10 seconds to remove any cleaner from inside the drum.



7.6 Monthly TESTS

Step 1

- Locate the weatherproof junction box in the bottom rear of the unit. Flip open the cover of the junction box to expose the "TEST" and "RESET" buttons on the face of the GFCI.

Step 2

- Test the GFCI by depressing the "TEST" button; the "RESET" button should pop out. Depress the "RESET" button to resume normal functioning. If the "RESET" button does not pop out during testing or is unable to be depressed back into place, the GFCI may be faulty; please contact us: sales@swimsuitdryer.com.

8 MAINTENANCE SCHEDULE

IMPORTANT MAINTENANCE INSTRUCTIONS

Start Date: _____

DAILY VISUAL INSPECTIONS:

- Ensure lid instructions are readable and undamaged.
- Check Lid Springs and plungers are functioning correctly.
- Ensure the Black Top inner ring is undamaged.

DAILY OPERATING INSTRUCTIONS:

- Press the lid down and immediately lift the lid to visually check the basket stops within 2 seconds. Repeat this process twice.

WEEKLY CLEANING REQUIREMENTS:

- Spray the outer body of the Swimsuit Dryer with disinfectant and wipe it down with the cleaning towel.

MONTHLY REQUIREMENTS

- Disconnect the power and remove the top cover to clean inside the liner. Test your GFCI/ RCD Monthly.

*Appropriate person who carried out the schedules below should sign their names below.

Recommend Product Service by: _____

END OF WEEKLY SCHEDULE:

Week 1	Week 2	Week 3	Week 4	Week 5	Week 6	Week 7	Week 8	Week 9
Week 10	Week 11	Week 12	Week 13	Week 14	Week 15	Week 16	Week 17	Week 18
Week 19	Week 20	Week 21	Week 22	Week 23	Week 24	Week 25	Week 26	Week 27
Week 28	Week 29	Week 30	Week 31	Week 32	Week 33	Week 34	Week 35	Week 36
Week 37	Week 38	Week 39	Week 40	Week 41	Week 42	Week 43	Week 44	Week 45
Week 46	Week 47	Week 48	Week 49	Week 50	Week 51	Week 52		

END OF MONTHLY SCHEDULE:

Month 1	Month 2	Month 3	Month 4	Month 5	Month 6	Month 7	Month 8	Month 9
Month 10	Month 11	Month 12						

Should any malfunctions or damage occur disconnect the power from the appliance and contact the Swimsuit Dryer Company Immediately: sales@swimsuitdryer.com.

9 Service Life/ Repair

To ensure continued reliability and safety we recommend the equipment is serviced/ inspected approximately every 4 years.

Service and inspections require:

- Visual inspection of labelling and replacing where required.
- Ohms test on the Proximity Sensors and brake clutch.
- Brake disassembly and any components worn replaced which include but not limited to the friction pad and springs.
- Replacement of the PCB.
- Rubber Mounts Checking and replacing if cracked or worn.

WARNING – All Swimsuit Dryers should be repaired or serviced by qualified personnel. Failure to service the equipment correctly could result in malfunction, injury or a fire risk.

9.1.1.1 Minimum service requirements

Service requirements for servicing your equipment every four years requires the following steps:

WARNING: TO AVOID INJURY OR DAMAGE, ONLY QUALIFIED PERSONS SHOULD REPLACE SERVICABLE COMPONENTS. Failure to service the equipment correctly could result in malfunction, injury, or a fire risk.

9.1.1.2 Step one disassemble the Swimsuit

- Disassemble the swimsuit dryer by removing the 3 top cover screws and removing the top cover.
- Remove the Hub screw and turn the hub in an anti clockwise motion to remove the hub.
- Disconnect the Lighting and proximity looms and remove the remaining chassis screws.
- Remove the entire body from the chassis.
-

9.1.2 Physical Inspection

- Check the equipment for physical signs of damage and wear and tear.
- Replace any items damaged, refer to Parts Manual.

9.1.3 Minimum Servicable Parts:

WARNING: TO AVOID INJURY OR DAMAGE, ONLY QUALIFIED PERSONS SHOULD REPLACE SERVICABLE COMPONENTS.

- Remove the PCB (P87) and replace.
- Remove and replace the Proximity Loom Assembly (C3) or the Body Complete (C0#)
- Disconnect the motor from the PCB box and remove the motor.
- Remove and replace the Rubber Mounts (P54 x 3).
- Remove the Fan cover and disassemble the Brake.
- Physically check the braking components for signs of wear and tear and replace the Friction Pad (P310).
- Reassemble the machine ensuring that all relevant screws (are replaced and are screwed in using Loctite 268.

All Swimsuit Dryers have been manufactured to be highly reliable, however, all electrical equipment can develop faults. Troubleshooting shooting videos are available on our website: <https://www.swimsuitdryer.com/troubleshooting-a-swimsuit-dryer/>.

WARNING: THE APPLIANCE MUST BE DISCONNECTED FROM ITS POWER SOURCE DURING ANY REPAIRS OR SERVICING.

10.1 Leaking

If the Swimsuit Dryer is leaking from the bottom of the unit, please resolve this immediately to prevent any damage to the motor:

- Remove the Top Cover, check and remove any blockages.
- Check the drainage hose is pulled all the way down. See installation instructions.
- Remove the Swimsuit Dryer from the wall and check for external cracks within the bowl.

If your Swimsuit Dryer is still leaking check your external waste connection or contact us: sales@swimsuitdryer.com.

WARNING – Long term blockages may reduce the life of the machine by damaging the motor/ and or causing the brake to malfunction.

10.2 Does not operate – Front LED is not on

POSSIBLE FAULTS:

- No Power to the unit.
- RCD/ GFCI is turned OFF.
- Fuse on the PCB has blown.
- PCB has developed a fault.

STEP 1: Push the lid down

If the Swimsuit Dryer operates normally but the LED is not working, the LED has failed and will require replacing.

Part Required: P30 LED.

STEP 2: Check the RCD/ GFCI underneath the Swimsuit Dryer has power

To check an RCD: Ensure the RCD is switched to the "on" position. Press the "test" button.

Checking a GFCI: Press the "Reset" button.

After pressing the Reset or Test Buttons the RCD/GFCI will make a clicking noise and turn themselves off.

If they DO NOT turn themselves off. The Swimsuit dryer has no power. Check your external power.

STEP 3: RCD/GFCI Turns off, but the LED is still not on the fault could be a PCB Issue.

Contact an electrician to check the PCB, They will be able to test the DC output with a Volt Meter or, Contact us.

RELEVANT PARTS:

P87 – Integrated PCB

P86 – GFCI (110 – 120V Regions)

P57 – RCD (220 – 240V Regions)

9.3 Does not operate – LED on but does not glow brighter when lid pressed

POSSIBLE FAULTS:

Missing proximity Magnets.

Blown Fuse on the PCB.

Faulty PCB.

Internal Proximity Loom Failed.

STEP 1: Check the magnets behind the Lid.

Remove the Lid instructions and check to make sure the lid magnets are inside the lid.

WARNING: ENSURE THE LID INSTRUCTIONS ARE REPLACED AND FULLY VISIBLE.

STEP 2: Check the magnet underneath the Top Cover.

Remove the top cover, turn it upside down and look to see if the magnet is still in place. If you are unsure, take a picture underneath the top cover and send us a picture:

sales@swimsuitdryer.com.

STEP 3: **WARNING: ELECTRICIANS ONLY** – Check the Fuses on the PCB

At the back of the Swimsuit Dryer, remove the PCB cover and check all the fuses are not faulty.

STEP 4: **WARNING: ELECTRICIANS ONLY** – Contact us for technical instructions on linking out the 12V circuit.

We can provide technical information on how to link out the 12V circuit to determine if the PCB is faulty.

RELEVANT PARTS:

C0###

P87 – Integrated PCB

P86 – GFCI (110 – 120V Regions)

P57 – RCD (220 – 240V Regions)

P5 – Lid Operating Instructions

9.4 Does not operate - Front LED glows brighter when lid pressed down but does not spin

POSSIBLE FAULTS:

Unit is blocked – items inside the liner need removing.

Blown Fuse on the PCB.

Faulty PCB.

Motor Capacitor Failed.

Motor Seized.

Brake Clutch Failed.

WARNING: THE APPLIANCE MUST BE DISCONNECTED FROM ITS POWER SOURCE WHEN THE TOP COVER IS REMOVED.

STEP 1: Remove the top cover

Remove the Top cover and check to see there are any items preventing the basket from spinning.

WARNING: ONLY ELECTRICIANS MAY REMOVE THE PCB COVER OR SUITABLY QUALIFIED PERSONS.

STEP 2: ELECTRICIANS ONLY – Check the PCB

At the back of the Swimsuit Dryer, remove the PCB cover and check all the fuses are not faulty.

9.5 Delayed stopping when lid is lifted

POSSIBLE FAULTS:

Water damage to the Brake

PCB Relay Fault

WARNING: TURN THE MACHINE OFF IMMEDIATELY AND CONTACT US:
sales@swimsuitdryer.com.

10.6 Warranties and Guarantees

All Swimsuit Dryers are covered by our GLOBAL GUARANTEE protection warranty. This Guarantees you a minimum of 1-year Global warranty for all Factory refurbished Dryers and 2 years for all New Swimsuit Dryer.

For full terms visit: www.swimsuitdryer.global.

10.7 Product Exchange/Repair/Disposal

If your Swimsuit Dyer has developed an operational fault, or it has reached its' 4-year service life, we provide a full aftersales support in the form of:

- Product Exchange
- Repair/ Service
- Parts Supply
- Product Recycling

For current pricing and information, you can find up to date information on our website:
<https://www.swimsuitdryer.com/troubleshooting-a-swimsuit-dryer/>

10.7.1 Product Exchange

For in or out of warranty product exchange requests we will require the serial number of the machine. Once agreed, and in accordance with our Global Terms a new or factory refurbished Swimsuit Dryer will be shipped with pre-paid return labels. Install your new or factory refurbished machine and place your faulty machine inside the packaging your new or factory refurbished machine was delivered in. Seal the box and place the pre-paid return labels on the box and contact us to arrange the collection.

10.7.2 Product Repair or Service

To arrange a product repair or service contact us or our appointed service agent. All information can be found on our website www.swimsuitdryer.com. Provide us with a description of the fault and an estimated quotation will be provided for the collection, repair, service and return of your Swimsuit Dryer.

WARNING: All returns must either be in the original box, or a box no larger than specified by us, or our authorized representative.

10.7.3 Parts Supply – Self Repair/ Service

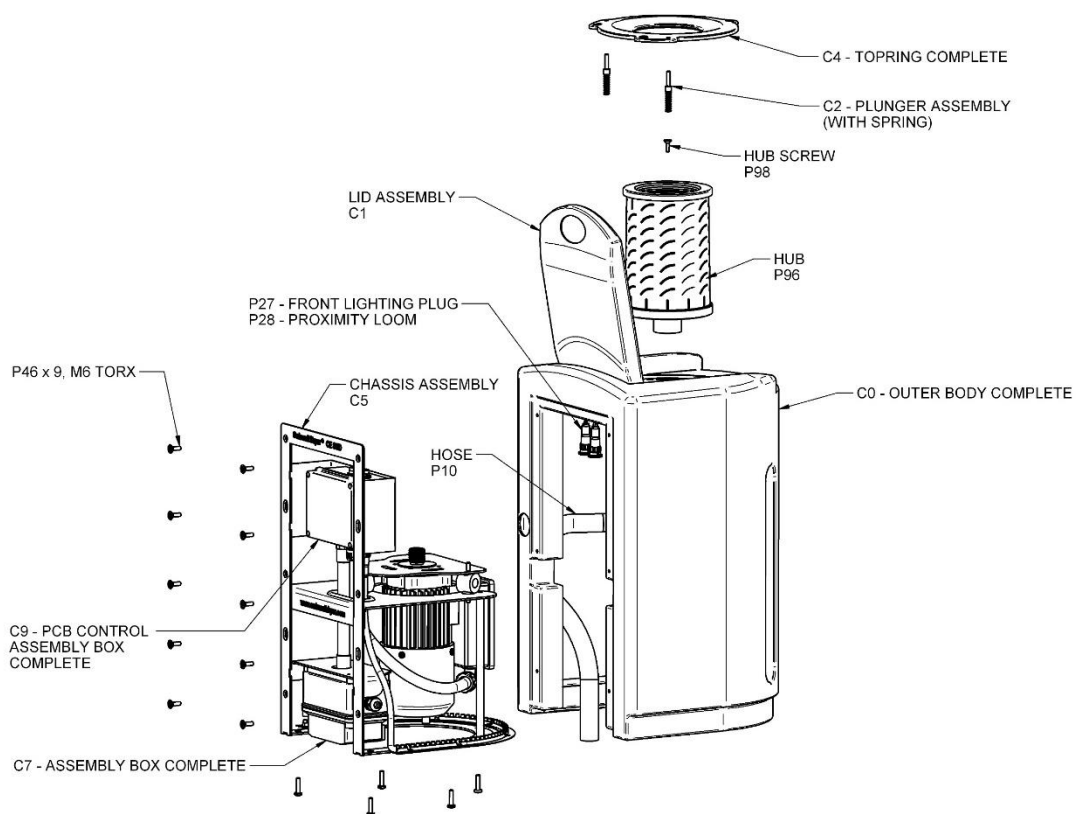
We operate a “right to repair” scheme. If the owner wishes to carry out a self-repair or service you can contact us, our authorized representative, for assistance in identifying the components that may require replacing or servicing.

WARNING: All Swimsuit Dryers must be repaired correctly and in accordance withing the user manual. FAILURE TO CORRECTLY REPAIR OR SERVICE YOUR EQUIPMENT MAY RESULT IN PERSONALY INJURY, FIRE OR OTHER DAMAGE. THE SWIMSUIT DRYER COMPANY OR ITS AUTHORIZED AGENTS ASSUME NO LIABILITY FOR DAMAGE OR INJURY CAUSED BY MALFUNCTIONS RELATED TO INCORRECT REPAIRS.

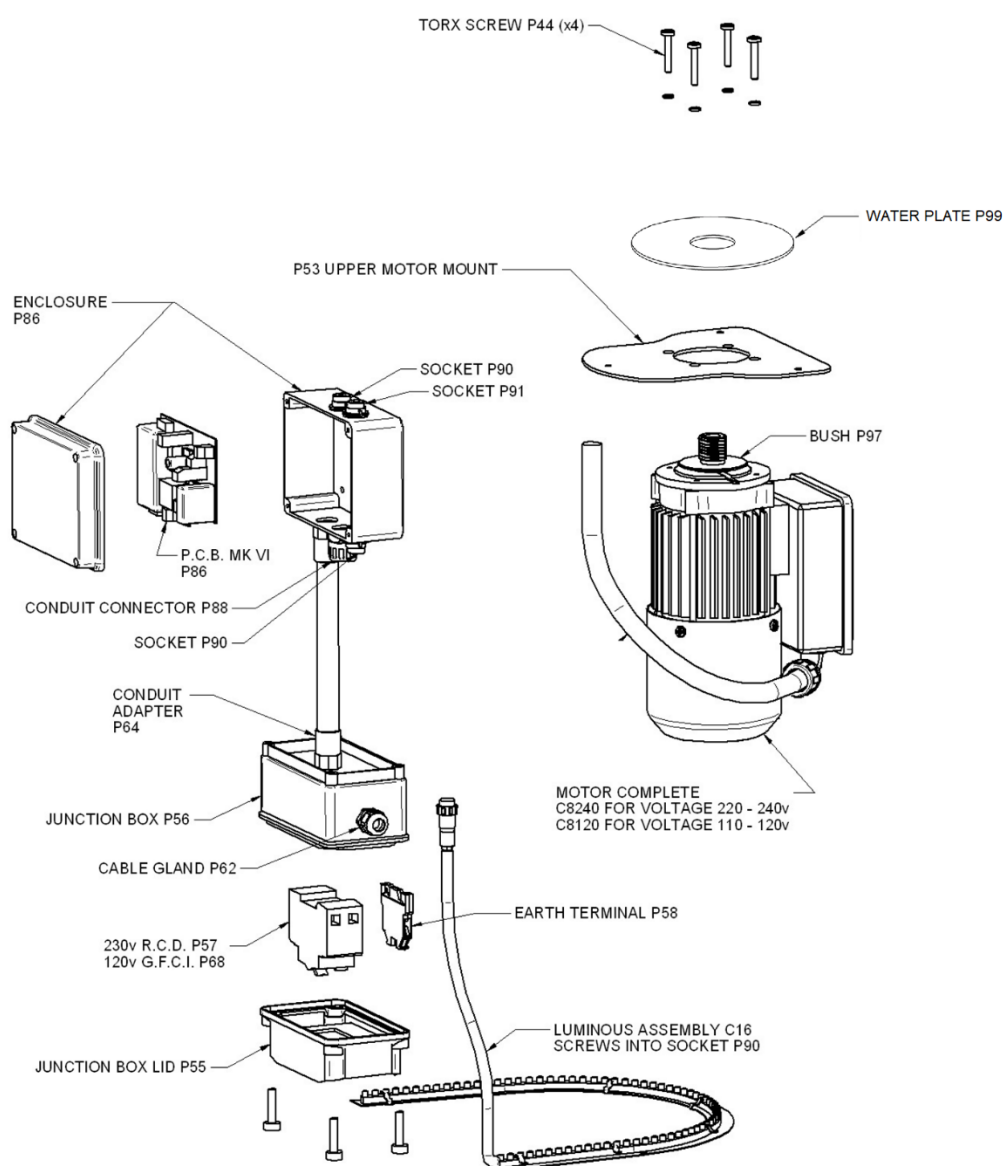
10.7.4 Product Disposal/ Recycle

Should you wish to dispose of your products please ensure this is done according to local Regulations and laws for the disposal of electrical equipment. Alternatively, you can contact us or an authorized representative who can arrange for the equipment to be collected and recycled.

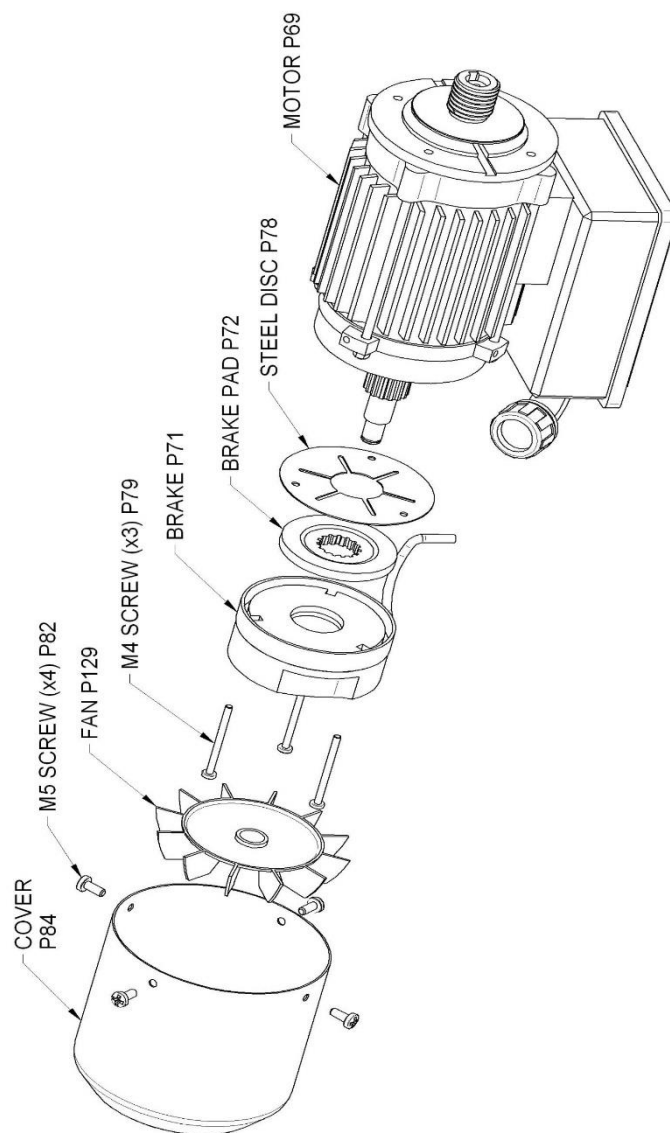
11.1 Parts



11.1 Inner Parts



11.1 Electrical Motor Parts



12 Technical Specifications

Weight:	20kg / 44lbs free standing 25kg / 55lbs fully boxed										
Energy:	Standby: approximately 3 watts Per hour Running: approximately 0.97 watts per cycle.										
Safety Details:	<table><tr><td>4 Year Service Life</td><td>PAT Tested</td></tr><tr><td>GFI Installed</td><td>PTO Installed</td></tr><tr><td>Low Voltage LEDs</td><td>IP54 Enclosures</td></tr><tr><td>Overload Protected</td><td>IP54 Brake Motor</td></tr><tr><td>IPX4</td><td>UL 94</td></tr></table>	4 Year Service Life	PAT Tested	GFI Installed	PTO Installed	Low Voltage LEDs	IP54 Enclosures	Overload Protected	IP54 Brake Motor	IPX4	UL 94
4 Year Service Life	PAT Tested										
GFI Installed	PTO Installed										
Low Voltage LEDs	IP54 Enclosures										
Overload Protected	IP54 Brake Motor										
IPX4	UL 94										
Voltage:	110-120 Volt 50/60 Hz local supply Single Phase supply										
Mounting:	Wall Mounted or Counter-Top										
Waste Hose:	60cm from the unit 23.62" from the unit Custom Length Available										
Basket Volume:	2 litres										
Waste Outlet:	Connects directly to waste outlet: 32mm / 1 1/4 Hose Internal Diameter 28.0mm / 1.10" Hose Outside Diameter 33.5mm / 1.31"										
Noise Emission:	Approximately 50 – 60dB when used correctly										
Warranty (FULL):	2 Year Global Guarantee – New 1 Year Global Guarantee – Factory Refurbished ** Inclusive of shipping, parts, and labor.										